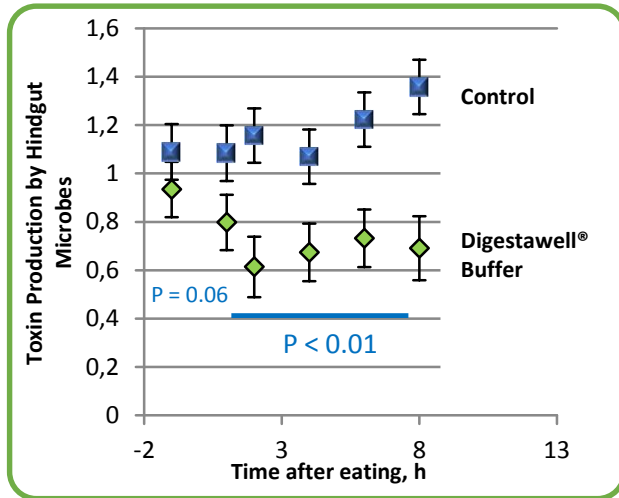


PROTECT YOUR HORSE FROM THE DAMAGING EFFECTS OF STARCH/SUGARS WITH DIGESTAWELL® BUFFER!

RESEARCH WITH DIGESTAWELL® BUFFER



References.

1. Suagee, J.K., R.K. Splan, K.L. Swyers, R.J. Geor, and B.A. Corl. 2015. Effect of high-sugar and high-starch diets on postprandial inflammatory protein concentrations in horses. *JEVS*. 35: 191-197.
2. Suagee-Bedore, J.K., A.L. Wagner and I.D. Girard. In Press. Validation of the postprandial interleukin-1b response in horses using equine-specific antibodies. *JEVS*. accepted.
3. Suagee-Bedore, J.K., A.L. Wagner, and I.D. Girard. 2016. Feeding DigestaWell Buffer to horses neutralizes the effects of high starch diets on blood pH and inflammation. Joint Animal Sciences Meeting. Salt Lake City, UT. 2016.

DIGESTAWELL® BUFFER Testimonials

"My warmblood has PSSM and has to maintain a low sugar diet or he absolutely loses his mind. This is especially noticeable in the Spring and Fall as the sugars change in the grass. Digestawell® Buffer is keeping us both safe!" -Heather, Boarding Facility Owner, VA

"D usually struggles through the Spring and Fall with her weight, and we have had issues in the past with founder. This past Spring she broke into the feed room and ate nearly ¾ of a bag of grain. I was panicked! I gave her a little extra Digestawell® Buffer and she never founderred! I am in love with this product!" -Ashley, Horse Owner, VA

"Having an insulin resistant Paint, I keep L on a low starch diet, adding Digestawell® Buffer has not only helped ease my worry of founder, but it has also helped keep his weight steady!" -Mary, Boarding Facility Owner, VA

DIGESTAWELL® BUFFER

For use to maintain a normal hindgut pH in equines

1. Creates a healthy environment for the microflora
2. Reduces inflammation
3. Improves insulin metabolism
4. Reduces the risk of laminitis episodes

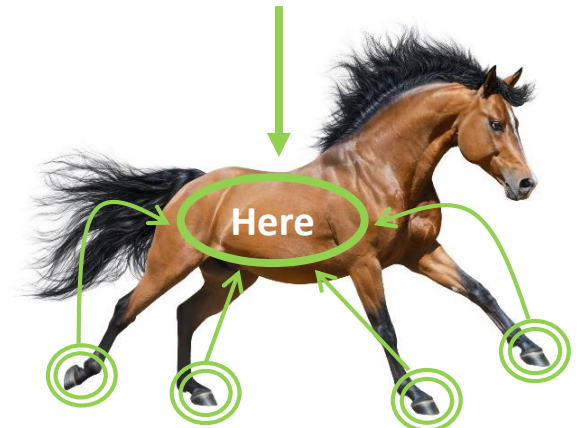


www.probiotech.com

6225 Blvd Choquette
St-Hyacinthe
QC, J2S 8L2
Canada



Hoof Health Starts

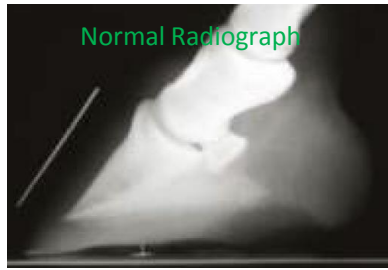


DIGESTAWELL® BUFFER

For use to maintain a normal hindgut pH in equines

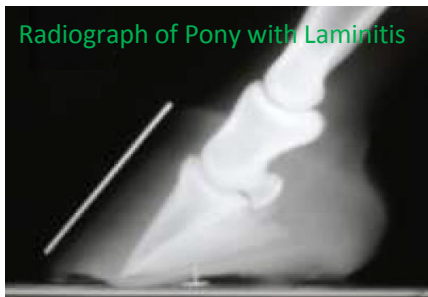


How is Laminitis related to gut health?

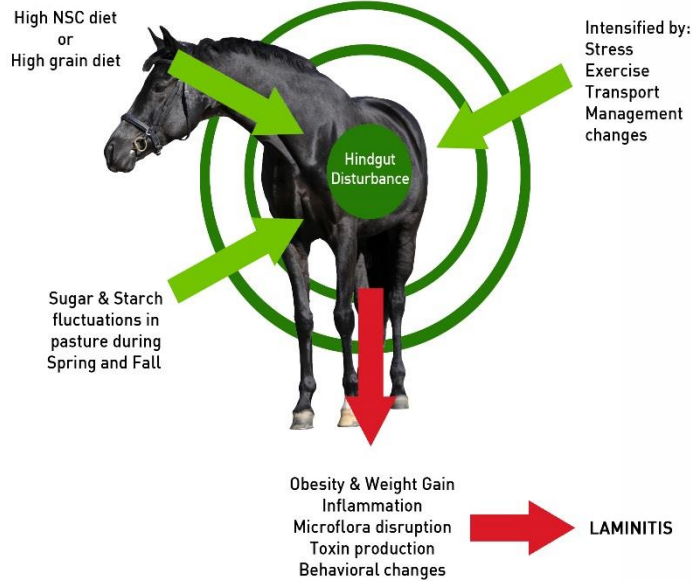


Normal Radiograph

Horses evolved as grazers consuming poorly digestible, grass-based diets that were low in nonstructural carbohydrates (NSC; sugar + starch). However, modern commercial diets contain higher levels of NSC which has been shown to predispose horses to impaired glucose and lipid metabolism. These impaired metabolic conditions are linked to a deadly disease of the hoof, laminitis. Until recently, the link between alterations in metabolism, low-grade chronic inflammation associated with obesity, NSC in the diet, and laminitis has remained a black box. Research has now demonstrated that even in metabolically normal horses, NSC ingestion causes the microflora in the gut to produce lactate (a strong acid) and toxins while creating a leaky gut. This allows for lactate and toxins to be absorbed into the blood stream, which leads to a rise in inflammation. For horses that are obese, or metabolically predisposed to insulin resistance, there is already a high level of circulating inflammation, which further impairs insulin signaling. Horses have a threshold for this inflammation and consuming higher levels of NSC in the pasture, such as during the Spring and Fall, or in the grain, by over-consumption, can push the systemic inflammation over this threshold, which leads to a laminitic episode.



Radiograph of Pony with Laminitis



How does DIGESTAWELL® BUFFER improve gut health?

Digestawell® Buffer's unique formulation benefits the horse in four ways:

1. Creating a healthy environment for the microflora
2. Reducing inflammation
3. Improving insulin metabolism
4. Reducing the risk of laminitis episodes

When a normal or obese horse consumes NSC, Digestawell® Buffer provides nutrients to the microflora to increase the conversion of lactate (a strong acid) into propionate (a weaker acid), and to buffer the hindgut. Because of this healthier environment created by Digestawell® Buffer, less toxins are produced, and a leaky gut is not created. Additionally, there is no rise in inflammation.

In the end, toxins and inflammation are not produced. This allows for improved insulin metabolism and reduces the chances of crossing the inflammation threshold. Ultimately, protecting your horse from a potential laminitic episode.

Backed by
University
Research

What is DIGESTAWELL® BUFFER?

Palatable white granular powder
(Net Weight: 1.2 kg)

Active Ingredients per scoop:

Sodium Bicarbonate	18 g
Cobalt Carbonate	9 mg
Vitamin B12	300 µg

Inactive Ingredients:

Hydrogenated vegetable oil.

How to Use DIGESTAWELL® BUFFER?

2-4 scoops (60-120 g) per day for a 500-kg horse. Can be given orally during or after meal time.

